

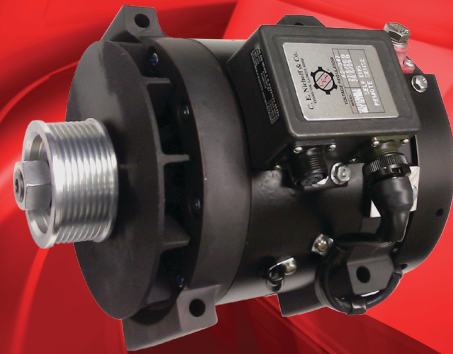


# C530 Alternator

28 Volt 225 Amp

## Key Features

**Digital Smart Regulator** option allows for battery charge rate optimization in all climates and operating conditions when used with corresponding voltage and temperature sense harness.



## Alternator Characteristics

Unique brushless construction eliminates rotating windings, brushes and slip rings. This increases durability, extends service life, eliminates arcing and reduces electromagnetic interference (EMI).

Six phase alternator design gives the added benefit of low output ripple and low EMI signature.

Rugged design withstands harsh environments and high vibration applications.

Unit has P terminal for optional tachometer use.

Overvoltage Cut-Out Circuit (OVCO) is a safety feature that detects high voltage in excess of normal voltage transients and prevents sustained overvoltage conditions.

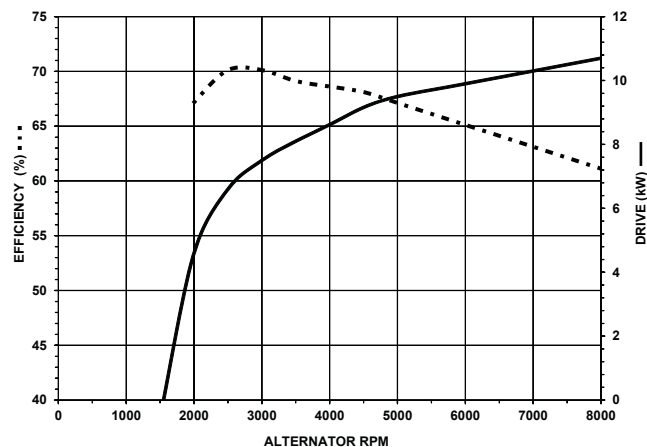
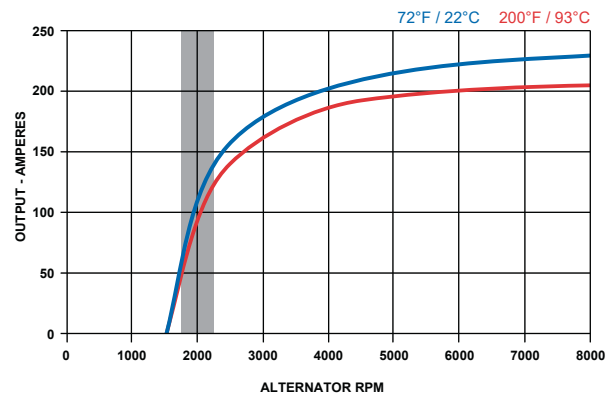
Bidirectional rotation with optional fresh air ducting.

Sealed bearings have high temperature grease and are heat stabilized for extended service life in hot engine compartments.

High efficiency operation: Lower internal operating temperatures resulting in longer life. Less engine power needed to produce electric power means more engine power available for other needs.

Designed and manufactured in the U.S.A.

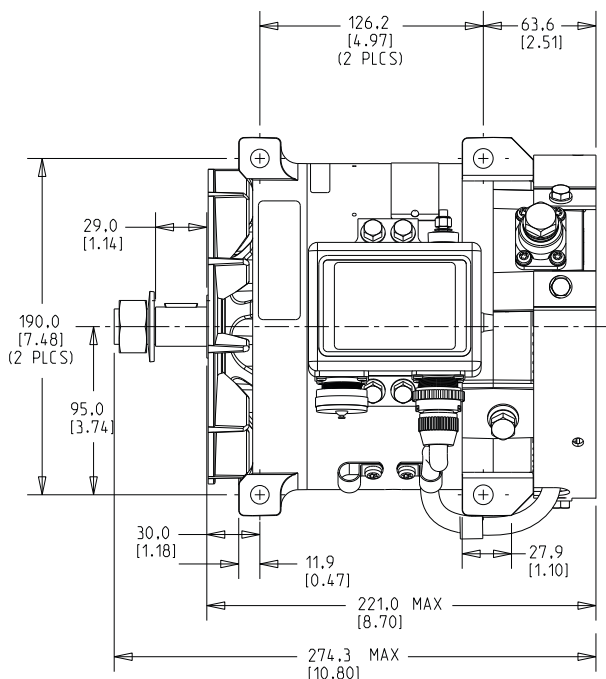
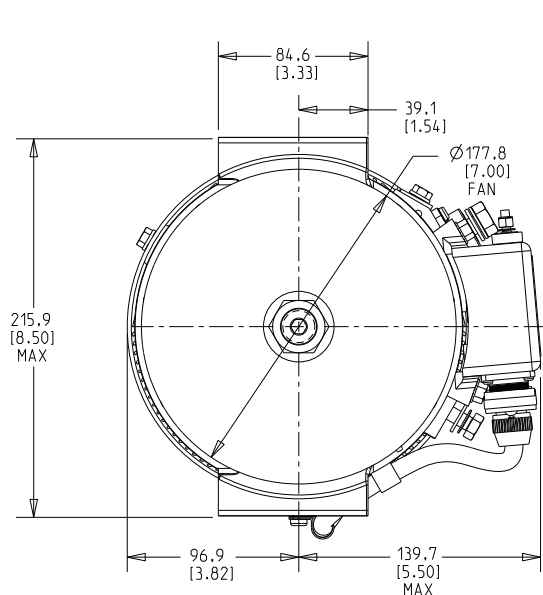
## Output and Efficiency



The measurements listed on the curves are taken at the listed ambient temperatures with a stabilized machine temperature, as per SAE J56. The shaded area highlights output available at typical engine idle alternator speed.

## Dimensions

Linear Measure mm [in]



## Unit Specifications

190mm pad mount bracket - short 3.33" mounting foot

External regulator

Bidirectional rotation

Rated for 8000 RPM continuous operation and momentary over speed to 10000 RPM

45 lb. / 20.6 kg unit weight

Negative ground

## Accessories




A2-357\* Temp/voltage sense regulator

8, 10, or 12 groove pulley

Fresh air duct

\*Please contact CEN for harness options for use with temp/volt sense regulators and smart regulators.

## Charging System Status LED Indicator

-  Green LED indicates regulator is energized and alternator is producing regulated voltage at set point.
-  Amber LED indicates regulator is energized and voltage is below set point or alternator is overloaded.
-  Red LED indicates Voltage is above set point.

